



# Gloucester County Nature Club

## Monthly Newsletter

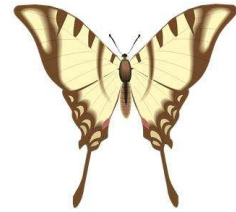
[www.gcnatureclub.org](http://www.gcnatureclub.org)

Nature Club meetings are open to the public

July/August 2010

This is an abbreviated version of our newsletter with all of the club's summer activities listed. The next newsletter will be the September issue. Enjoy the remainder of your summer!

- Barry Bengel, Newsletter Editor



### **Field Trip – Birds, Blooms, and Butterflies at Riverwinds**

**Sunday, July 18th, 8:00 AM to Noon**

**Trip Leader: Karl Anderson**

Meet at 8:00 AM at the parking area for the West Deptford Scenic Trail.

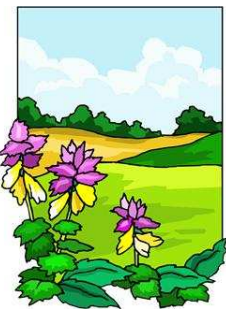
Bring binoculars, beverage, and insect repellent. Dress to suit the weather. This will be a leisurely walk on a level, dry mowed trail. We might also visit some fields near the Riverwinds complex. We should see some summer flowers and grasses, a few birds, some butterflies, and a few dragonflies.

**Directions:** See your guide to the Natural Places of Gloucester County. Or, from the intersection of Delaware Avenue and Broad Street in the center of Woodbury, go west on Delaware Avenue for about 2.2 miles. The entrance to the trail will be on the right, about 0.3 mile after you cross Grove Street.

### **Field Trip – Meadow Flowers at Bowman's Hill Wildflower Preserve, New Hope PA**

**Sunday, August 8th, 9:00 AM to Mid-afternoon**

**Trip Leader: Karl Anderson**



Meet at 9:00 AM in the Bowman's Hill Wildflower Preserve parking lot off Route 32 (i.e., do not go through the gate in the deer fence that surrounds part of the preserve). Bring binoculars, lunch, and beverage. Bowman's Hill is a 134-acre wildflower preserve, just south of New Hope. It has a visitor center, rest rooms, and a book shop. In August the late summer flowers in their six-acre entrance meadow should be in full bloom, making a nice display and attracting butterflies. After exploring the meadow, we will continue on to some additional trails through woodlands and around a small pond.

**Directions:** Take I-295 north all the way until it merges with I-95 South, just north of Trenton. Continue on I-95 across the Delaware River, then make the first right (Exit 51) onto Taylorsville Road, heading for New Hope. In about seven miles, turn left (north) onto River Road (PA Rt. 32) and go 2.5 miles (past the road to Bowman's Hill Tower on the left and then Thompson-Neely House on the right). The entrance to the Preserve is on your left. Mileage from Woodbury is about 62 miles, travel time about one hour and 15 minutes. There is a \$5.00 admission fee to the preserve.

## **Field Trip Report – Brendan Byrne State Forest, June 12**

The weather was pleasant and the fauna and flora cooperative during this excursion to a 32,000-acre Pine Barrens preserve. Oak forests, pine forests, cedar swamps, and a lakeshore were visited. The typical heath shrubs, oaks, and pines of the Barrens were seen. Three species of orchids were found, and five species of carnivorous plants, including three species of sundew. Some additional plants were cranberry, early pipewort, goat's-rue, orange milkwort, laurel-leaved greenbrier, curly-grass fern, and the rare adder's-tongue fern. Birds seen or heard included great crested flycatcher, eastern bluebird, pine warbler, and prairie warbler. Herps included spotted turtle, southern leopard frog, Fowler's toad, carpenter frog, and wood frog, this last species being quite unusual for the region. The trip was led by Karl Anderson.

## **Family Fun Stream Walks** - all ages are welcome!

**Trip Leaders:** Paula Hayes (856) 468-9272  
Maria Keefe (856) 627-7010

**Email:** [pnbhayes@comcast.net](mailto:pnbhayes@comcast.net)  
**Email:** [walkingwith4boyz@comcast.net](mailto:walkingwith4boyz@comcast.net)

We'll explore what is in, on, under and around the creek as we walk in the water. We'll look for fish, frogs, turtles, mussels, animal prints, flowers, birds and more. Wear appropriate water shoes or old sneakers to walk in the water and bring repellent. **See below for dates, times, and locations.**

### **Fri., July 9th at 9:30AM Stewart Memorial Park, South Harrison Township**

**We just discovered this park and it has easy access to Oldman's Creek, join us as we explore this park in the southern end of the county.**

**Directions:** Exit Route 55 at exit 48 and travel on Ellis Mill Road Route /641 toward Harrisonville. Turn right onto Harrisonville Way/ Route 616/ Ferrell Road- stay straight on this road. The park is a few miles down this road on your left soon after you cross Monroeville Road/ Route 694. We will meet on the playground. There is also a picnic pavilion if you'd like to bring lunch to enjoy afterwards.



### **Fri., Aug. 20th at 9:30 AM in Pitman**

**This stream walk is an old favorite, we do this one most years and it is always filled with a surprise or two.**

**Directions:** From Broadway in Pitman go west on Holly Avenue. Turn right at Elm Street (the 4th street on the right; before Alcyon Lake). Make the 2nd left onto Albert Ave. Proceed to end of Albert. Parking is on left, behind Memorial School. We'll meet in the parking lot.

## **New Jersey Ferns Course**

Tuesday, July 20, 7:00 to 9:00 PM indoors, and Saturday July 24 and Sunday July 25 in the field.

**Instructor: Karl Anderson**

This three-day course will include an evening session at the Rancocas Nature Center in Westampton, plus two field trips, lasting 10:00 AM to about 3:00 PM. Topics to be covered, with images and specimens, will include fern taxonomy, the fern life cycle, gross structure, and "what to look for" when identifying a fern. One field trip will visit the Pine Barrens and the trails at the Rancocas Nature Center;

the other will be to Bowman's Hill Wildflower Preserve and Bull's Island. During the field trips we should see over 30 fern species. Participants will be encouraged to bring in specimens of native ferns for identification. Cost for the series is \$40.00 for members of New Jersey Audubon or the Gloucester County Nature Club, \$60.00 for non-members. For information contact the RNC at (609) 261-2495, or Karl Anderson at (856) 845-7075. Course will be cancelled if a minimum registration is not met.

### **Events by other Organizations: July / August 2010**

- July 17 (Saturday) - **Beginning Birding for Adults.** 9:00 AM - noon. \$Fee. Sponsored by the Palmyra Cove Nature Park. For info: <http://palmyracove.org/>.
- August 7 (Saturday) - **Botany along the Maurice River.** 10:00 AM - Mid-afternoon. Leaders: Renee Brecht and Gerry Moore. Sponsored by the Philadelphia Botanical Club. For info: [http://www.ansp.org/hosted/botany\\_club/](http://www.ansp.org/hosted/botany_club/)
- July 24 (Saturday) – 9:00 AM **SJLWT Walk in the Woods Series.** 9:00 AM. Sponsored by the South Jersey Land and Water Trust. Please join South Jersey Land and Water Trust staff member Michael Hogan and supporter Lorraine Keifer for a 2 hour guided tour of **Triple Oaks Nursery** in Franklinville, on Saturday, July 24, 2010 at 9:00 AM. Tour the extensive display gardens along the Little Ease Run, which is a tributary of the Maurice River. The gardens include examples of natives, sun and shade loving plants, trees, shrubs and perennials. Along the way learn how to garden naturally. Light refreshment will be served. Participants will receive a 10% off coupon for all nursery purchases. For more information and maps contact Michael Hogan at 609-476-2086 or [hoganphoto@verizon.net](mailto:hoganphoto@verizon.net).

**Directions:** Route 55 South, proceed to Exit 43, take LEFT at the stop at the top of the ramp onto Little Mill Road, and then make a RIGHT at the traffic light onto Route 47 (Delsea Drive). Triple Oaks is about 2.5 miles on the right, 1/4 mile South of the center of town.

**The following events take place at the Scotland Run Nature Center in Clayton.** For details and to register for programs, call the center at (856) 881-0845. All events are free.

- Bird Walks: Tuesdays 7/13 and 8/10 at 6:00 PM
- Nature Explorers: Wednesday 8/11 & 8/25 at 10:00 AM

### **Natural Events for the month of July**

- Blueberries ripen in early July.
- Bog asphodel, now found only in New Jersey, blooms in early July in Pinelands fens.
- The first brood of monarch butterflies is emerging from their chrysalis.
- Raccoons, skunks, and opossums are digging up and eating turtle eggs.
- Breeding and nesting season for birds ends this month except for goldfinches and late bluebirds
- Thistle plants are beginning to seed; goldfinches gather thistledown for nesting materials
- Listen for the feeding calls of young barred and great horned owls.
- Yellow warblers begin to head south in July; migration is complete in August.

## Natural Events for the month of August

- Perseid meteor shower - August 12.
- Sweet goldenrod, early goldenrod, cardinal flower, and other late-summer flowers bloom.
- Sweet pepperbush in bloom.
- Purple martins begin roosting in phragmites along the Maurice River near Port Elizabeth in preparation for their southern migration. Peak numbers usually occur around the third week in August.
- Red knots pass through New Jersey again on their southward migration to Chile. Adults are still in breeding plumage.
- Fall raptor migration begins in mid-August with small numbers of several species, including American kestrels, ospreys and bald eagles.
- Gray squirrels give birth to second brood.
- Early warblers migrating south through New Jersey.
- American goldfinches finish nesting late in this month
- Second brood of hummingbirds begin to appear at feeders.
- Birds are feeding on fruits of flowering dogwood trees.

## Pinelands Photographic Workshops

You have the passion, now learn the secrets and best practices needed to capture those beautiful Pineland images. Two veteran professional New Jersey photographers, Steve Greer and Albert D Horner, invite you to a workshop on the finer points of landscape photography. There will be three two-day sessions available during the Fall of 2010 (October 23 & 24, October 30 & 31, November 6 & 7). Courses will be held at the Michael Huber Center on the grounds of the Pinelands Preservation Alliance's Bishops Farmstead, in Southampton, NJ... Be on the look out for our Spring Schedule.

**RESERVE YOUR SPACE NOW! PACE IS LIMITED AND WILL FILL QUICKLY!**

Visit us on the web at [www.pinelandsphotographicworkshop.com](http://www.pinelandsphotographicworkshop.com) for more details and to reserve your space.

## Conservation Corner: Reduce and Reuse by Deb Maka

Are you looking to lose some of your clutter? Here are some websites that will allow you to donate or recycling unwanted items.

Cell Phones	<a href="http://www.911cellphonebank.org">www.911cellphonebank.org</a>
Laptop Computers	<a href="http://www.recycleforbreastcancer.org">www.recycleforbreastcancer.org</a>
Professional Clothes	<a href="http://www.dressforsuccess.org">www.dressforsuccess.org</a>
Coats	<a href="http://www.onewarmcoat.org">www.onewarmcoat.org</a>
Sneakers	<a href="http://www.nikereuseashoe.com/">http://www.nikereuseashoe.com/</a>
Waste Disposal (batteries, expired medication, paint, plastic bags, etc)	<a href="http://www.earth911.com">www.earth911.com</a>
Anything neighbors might want	<a href="http://www.freecycle.org">www.freecycle.org</a>

Reference: Family Circle; 2009, Nov 1, page 148

## **Kid's Corner: Become a Park Explorer** by Deb Maka

You don't have to travel far to have an adventure. As a family, go on a park hunt.

- Travel to another neighborhood (by car or bicycle depending on the distance).
- Find a new public park to explore. Each park you find will be a little different. Look for things like different playground equipment, walking paths, and picnic tables.
- Keep a list of your favorite parks and come back during different seasons to see how the park changes.

\* adapted from Disney Family Fun magazine (FamilyFun.com); Become a Park Explorer

### **Wild Birds Unlimited offers an everyday 10% discount to GCNC members!**

Wild Birds Unlimited offers an everyday 10% discount (for non bird food items) to GCNC members! *Due to the current volatile market for bird food, the 10% discount for these items has had to be discontinued.* However, members will still receive credit for their purchases towards the Frequent Seed Shopper Program. WBU offers the GCNC discount on all other items in the store. Members are requested to identify themselves as GNNC members before their sales are finalized. Questions? Please contact Sharon at (856) 218-2973 or [sillybird348@comcast.net](mailto:sillybird348@comcast.net).



### **Club Notes:**

- If you'd like to receive the newsletter electronically or receive more info about the club please email Karen Kravchuck at [blackbirdsinging@hotmail.com](mailto:blackbirdsinging@hotmail.com) or call (856) 468-6536.
- The Nature Club is always looking for ideas for future programs and field trips. Please contact the program or trip coordinator if you have ideas or would like to help.
- Information for the next newsletter should be sent to Barry Bengel at [sharkeyes@comcast.net](mailto:sharkeyes@comcast.net) or GCNC Newsletter, PO Box 563, Sewell, NJ 08080 by the 15<sup>th</sup> of the preceding month.